

SOLARGENIX ENERGY

Product Catalogue and Price List

Winston Series CPC Collector



Specifications

Dimensions	6.88'x3.50'x0.28'
Area	24.10 ft ²
Aperture	22.51 ft ²
Volumetric Capacity	2.5 gl
Weight (empty)	106.6 lbs
Test Pressure	120 psig
Number of Cover Plates	single glazed
Flow Pattern	parallel
Number of absorbers	twelve

Materials

Enclosure	aluminum frame and back
Glazing	tempered low iron glass, 0.33 cm thick
Absorber	copper tube with CPC reflector
Absorber coating	selective coating
Insulation	polyurethane, 2.5 cm thick (back/3.1 cm thick (side)

Price

Part Number	WS0503
1-2	\$1,000 each
3-10	\$840 each
11-30	\$800 each
31-50	\$760 each
51-100	\$700 each

Sol Pac Heat Exchanger Module



Specifications

Dimensions: 12 7/8"x12 5/16"x30"
DC Circulation Pump with 20W PV Panel
Stainless Steel and Copper Components
Summer and Vacation Bypass

Price

Part Number	SPHEM
1-2	\$1,500 each
3-5	\$1,395 each
6-10	\$1,325 each

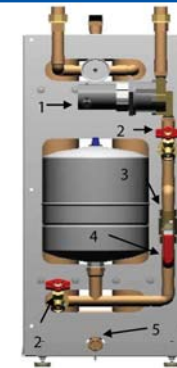
FRONT VIEW:

- 1 - pump
- 2 - fill/drain valves
- 3 - check valve
- 4 - bypass valve
- 5 - cold water inlet

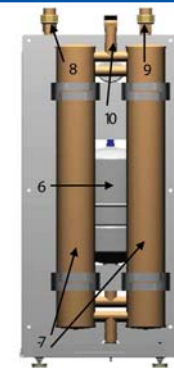
REAR VIEW:

- 6 - expansion tank
- 7 - heat exchangers
- 8 - connection to solar panels
- 9 - bypass valve
- 10 - hot water outlet to storage

Front View



Rear View



Solar Storage Tanks

Specifications

80 Gallon

120 Gallon

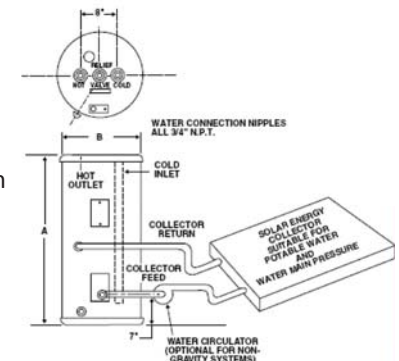
Price

Description



Part Number	81V80HE-T	SP-R81v120HE	80-GL	\$2,263 each
Height	58.75"	62.00"	120-GL	\$2,789 each
Diameter	24.50"	28.25"		
Weight	222 lbs	380 lbs		
Length of tubing	120 ft	143 ft		
Coil Capacity	2.2 gallons	2.6 gallons		
Approximate R factor	R-17.3	R-17.3		

Brass drain valve
Temperature and pressure relief valve included
Inlet and outlet fittings located at front of tank
Double wall, vented design for positive leak detection
Automatic temperature control



SOLARGENIX ENERGY

Product Catalogue and Price List

IMC Eagle 2 Controller Specifications



Part Number	IMCE2
Differential	8/4 to 24/4 °F
High Limit	110 to 200 °F
Accuracy	+/- 1 °F
Environmental	-10 to 120 °F; 0 to 95% RH
Sensors	10K @ 77 °F
Dimensions	5.00"x6.12"x2.50"
Input power	2 Watts @ 120 VAC
NO contact	20 AMP or 1HP @120 VAC with 30 sec ON delay
NC Contact	10 Amp or 1/3 HP
Price	\$208.25



Part number - SOLR-TS04
Immersion style themistor with 1/4 NPT fitting, 4" long
Price: \$29.98



Part number - SOLR-TS03
Plug style thermistor, screw in 1/2NPT
Price: \$22.98

Grundfos Circulation Pump Specifications



Part Number	5332042
Attributes	3 speed, 1/25 HP
Pump housing	32 °F to 230 °F
Temperature range	Cast iron
Flow range	0-17.5 gpm
Head range	0-19 ft
Max working pressure	145 psi
Motors	2 pole, single phase 115 Volt
Price	\$117.60



Part number - 8781051
Circulation pump flange kit
3/4 FPT Cast Iron
Price: \$12.01

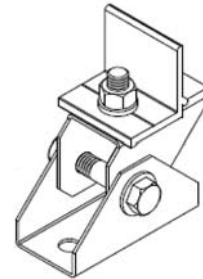
Mounting Hardware

Description

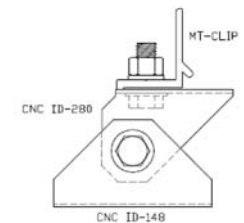


The mounting hardware clips directly to the aluminum frame wall without the need of any wall penetrations. The hardware is designed to withstand category five hurricanes (wind loads over 180 mph/ 94 psf). The universal design provides easy installation at various tilts.

Specifications



Part Number UMHDS
Material Aluminum
Price \$50 for set of four



SOLARGENIX ENERGY

Product Catalogue and Price List

Winston Series Systems - Additional Parts



Part number - 7375101
Amtrol expansion tank
Hydronic Diaphragm
Extrol model
Price: \$39.90



Part number - 5515800
Thermal immersion well
Copper 3/4" NPT, 1-1/2"
Insulation, 3" Insertion
Well with Mounting Clamp
Price: \$28.72



Part number - T400
Tridicator temperature
and pressure gauge
Price: \$31.08



Part number - *HYD
Omega Probe Thermister
Price: \$80.94



Part number - *209
Bell & Gaussett Auto Air Vent
Float type air vent
Price: \$89.25



Part number - 964*
Watts pressure relief valve
125 PSI 3/4MPT
Price: \$53.29



Part number -9503306
NIBCO Boiler Drain
3/4 NPT 74-CYL 710-D
Price: \$6.95



Part Number 964*
Material Brass
Copper connections 3/4" threaded
Temperature range 120 °F - 160 °F
Minimum flow 2 gpm
Price \$142.36

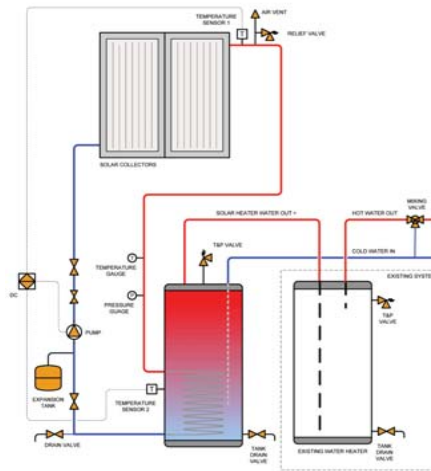


Part number - 6565021
NIBCO Full Port ball valve
Price: \$9.01



Part number - 9471400D
NIBCO Swing Check Valve
Price: \$60.95

Winston Series Closed Loop Systems Kits



All of our kits are composed of quality, industry standard components designed to meet the strictest building codes and afford optimum life span for our systems. Our kits include the WS0503 CPC (Compound Parabolic Concentrating) Winston Series Solar Thermal Collector, a storage tank with an inline heat exchanger, an expansion tank, a differential controller, sensors and all the gauges and fittings necessary to complete your installation.

WS0503 -80 2C 80 gallon system with two collectors \$4,290

WS0503-120 4C 120 gallon system with four collectors \$6,380

Additional Collectors \$700

Please reference attached lists for full system kit product information